



WebVision

100% quality control

Professional Services

Acquiring a print inspection system is not just installing a piece of hardware on your print room floor - it's establishing a partnership to help make your operation as accurate and productive as possible.

Tecnau offers a variety of professional services to help you make optimum use of your WebVision print inspection system and bring you that success:

Software deployment and Implementation

We'll spend extra time developing, validating and deploying your job templates.

Enhanced expert training

We'll spend extra time with designated "experts" within your organization, training them in template development and assisting as WebVision is implemented into your workflow.

Custom solutions group

We'll help you tie WebVision to your ADF systems, set-up auto divert functionality, or develop special features tailored to your operation.

Management reports

WebVision offers managers the ability to move beyond fixing problems as they occur - managers now have a resource for learning where faults typically occur to pro-actively attack the underlying problems. Reports are web-based for easy availability and may access an on-board SQL database for real-time lookup, analysis and logging. Report capability is available with Integrity, Print Quality and Full software packages.

User-friendly features

WebVision's flat touch screen, two-up full screen color view, and multi-lingual operator interface ensure that WebVision is easily accessible by print operators. Template-driven settings make it easy to change the parameters of existing jobs or program in new jobs.

Hardware configuration choices

A quality inspection system is only as good as the paper-handling platform - an unstable inspection location means an unreliable test. Tecnau has more experience moving paper with digital printers than any company in the industry, so you can trust WebVision's paper-handling alternatives for reliable inspection:



WebVision EXspect

The WebVision EXspect hardware configuration consists of a stand-alone tower positioned between the web-fed digital printer and the finishing module. EXspect matches particularly well with complex printer configurations with varying paper paths.

WebVision ONspect

WebVision ONspect hardware configuration installs WebVision's viewing cabinet at the infeed of the Rewinder 555, minimizing footprint and your investment while still offering full functionality

WebVision INspect

WebVision INspect hardware configuration installs inside your high-speed digital printer or at a suitable location on a Tecnau finishing module. INspect minimizes footprint and reduces your investment.

Technical Specifications

Performance / Media

Speed max.

taut web	750 fpm	228 m/min
slack web	350 fpm	108 m/min

Print Simplex, Duplex, 1-up or 2-up

Feeding Pinfed or pinless

Paper weight 11# bond-110# index, 42-200 gsm

Web width 8" - 21" 200 - 530 mm

Resolution 360-dpi grayscale or color

User interface

- ✓ Touch screen wide-format (2-up) monitor
- ✓ Multi-lingual operator interface (English, Spanish, French, German, Polish, Japanese, Swedish, Dutch)
- ✓ Simple template-driven job setup
- ✓ Multiple simultaneous areas of interest and quality tests per page
- ✓ Freeze, pan, zoom and replay images
- ✓ Visual warnings and alerts

Data Management

- ✓ On-board SQL database for real-time lookup, analysis and logging
- ✓ Extensive data export capabilities

Software capabilities

- ✓ Barcode grading
- ✓ Print Quality Verification
- ✓ Color Verification
- ✓ Format Verify, Postal Verify, Address Verify, and Sequence Verify
- ✓ Job tracking and reporting
- ✓ Matching (front to back)
- ✓ Data Validation
- ✓ Image recording and output, and more

Supported symbologies

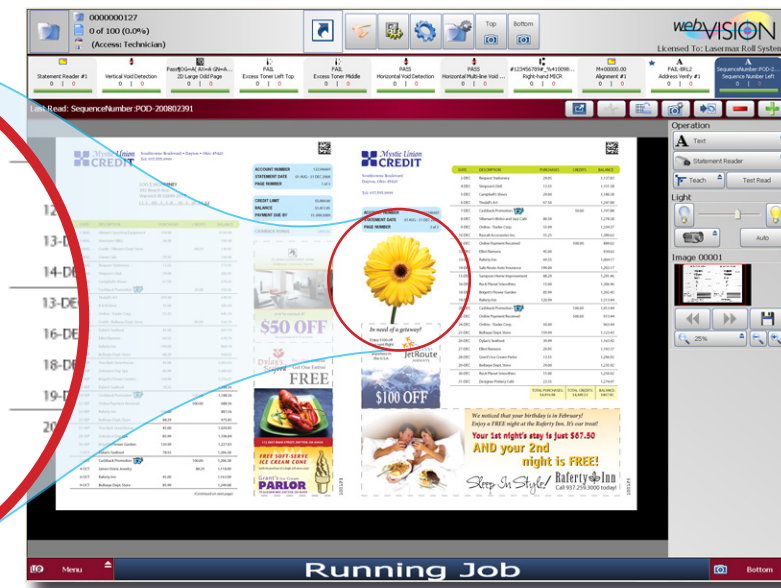
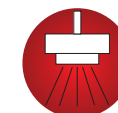
- ✓ WebVision reads common 1D, 2D and Postal barcodes, as well as OCR fonts

System connectivity

- ✓ Real-time connectivity with ADF systems
- ✓ Communication with printers and/or post processing devices
- ✓ Generate configurable data output to networked systems



webVISION



100% quality control
at full production speed

- ✓ Inspect the entire web
- ✓ 360 dpi resolution for color
- ✓ Target critical areas
- ✓ Take predetermined actions
- ✓ Reduced waste
- ✓ Job templates for quick setup

Examine every page of print in-line as it's produced on today's fastest color or monochrome digital printers and perform instant analysis to ensure quality results. Whether your business handles transactional print, transpromotional documents or print-on-demand, WebVision digital print quality assurance system from Tecnau guarantees that you're putting your best face forward to your customers.

WebVision analyzes print immediately, so problems are identified immediately and corrective action may be taken immediately. Reprints and the corresponding waste of time and materials are all slashed dramatically.

Connect WebVision to an Automated Document Factory (ADF) to automate diversion of bad output with no operator intervention. An available full suite of management reports and an available ADF link offer the opportunity to gain critical insight into production processes to prevent future problems from ever happening.

Global service and around-the-clock support help ensure our reputation as the industry's reliability leader. Our products increase productivity, cut labor and paper costs, and even make new applications possible - Tecnau solutions truly empower digital print to help you do more with less.

07102014

©2014 Tecnau. All rights reserved. The Tecnau name, logo and WebVision™ are trademarks of Tecnau. Tecnau reserves the right to make any technical amendments without prior notification.



TECNAU

www.tecnau.com

Europe	Italy	+39 0125 631678	info.it@tecnau.com
	Sweden	+46 372 256 00	info.se@tecnau.com
Americas	USA	+1 978 608 0500	info.us@tecnau.com
Asia Pacific	China	+86 159 00710147	info.cn@tecnau.com
	Singapore	+65 6793 9478	info.sg@tecnau.com

TECNAU
Empowering Digital Print



WebVision consists of a paper-handling module, high resolution cameras, a controller, and a high-resolution touch-screen monitor. The system is powered by sophisticated image capture and analysis software. Freeze, pan, zoom and replay images. Choose multiple simultaneous areas of interest and quality tests per page.

With increasing printer speeds, and the common use of barcodes, it is not possible for operators to perform manual inspections of print quality. WebVision's high resolution cameras guarantee that a variety of quality or job integrity faults will be identified.

WebVision takes predetermined actions in response to identifying a fault. You decide how critical a particular test is during initial set-up, and accordingly instruct WebVision how to respond to a failure. Choose different responses for different test failures. From simply logging a failure to stopping the print line, WebVision takes the action you want, when you need it.

WebVision enables automated analysis of data integrity, image quality, and work-flow processes, through a broad array of testing functions grouped together in software packages for a cost-effective solution that matches your needs:

Alignment

Postal Verify

Color Verify

Void Detect

Streak Detect

ANSI Barcode Grading

Data Integrity

Logo Match

Sequence



View Only

This is an entry level solution which displays a picture of the printed image to give the operator a possibility to check the printed output visually. The monitor will refresh with new images per the configured frequency.

Bar Code Read

In addition to View Only capability, Bar Code Read tests readability of sixteen bar code symbologies, including Code 128, Code 39, Interleaved 2 of 5, 2D Datamatrix, QR code, MICR and Postnet. Image save and playback are also supported.

Integrity

In addition to Bar Code Read capability, Integrity package includes the following:

Data matching

Read and compare data from multiple locations to ensure a match. Capabilities include matching from a file, comparing data from the front of the form to the back side of the form, or matching data anywhere within a form.

Postal standard verification

Verify the integrity of the address block.

Duplicates check

Check a job id against a database to ensure that a single job is not printed twice.

Sequence verification

Read a sequence number on a document and confirm proper sequencing. WebVision alerts the operator to missing, duplicate or out of sequence numbers, and notifies the operator

of the expected sequence number.

Data validation

Read data and validate that it is accurate - for example, confirm that the payment amount on a check is correct. Also, validate that the data element is in the correct (expected) format. Does it have a dollar sign? Is the decimal in the right place, are there the correct amount of digits (both alpha and numeric)?

Perforation detection

When paired with a dynamic perforating module, verifies the presence and location of a desired dynamic perforation.

Alignment

Verify proper alignment of print to edges of page.

Print Quality

In addition to Bar Code Read capability and the Alignment test, Print Quality package capabilities include the following:

Color verification

Match printer output to a color pattern sample translated to a CIElab standard. WebVision provides a warning if the color drifts beyond a user-defined threshold.

Streak detection

Look within an identified expected white zone for streaks and ensure no print appears there. WebVision also has the unique ability to look at a defined area on the page, which may or may not have print, and distinguish between desired printed copy and undesired print (a streak or smear in the area).

Void / Jet-out detection

Ensure printed lines and color blocks do not contain unwanted white space. WebVision checks the uniformity of a printed object along its horizontal and vertical lines to ensure inkjet heads are functioning as intended.

Pattern/logo match

Verify that a stored image pattern appears as required on a page. For example, confirm that a signature is properly in place on a check. WebVision is also capable of locating stored image patterns on a page without defining a specific region of interest, and testing those images for accuracy.

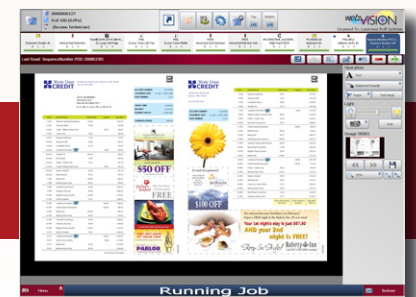
Barcode grading

Grade barcodes using 13 ANSI specifications, such as decodability, defects, edge

determination, symbol contrasts. etc. The user defines lowest allowed overall grade, based upon the internal standards required to avoid issues on downstream processing systems. Supported barcodes include 1D, 2D Datamatrix, PDF 417, MICR, and ISO/IEC 15415 and 15416. High-resolution imaging allows grading of very small barcodes.

Full WebVision Software Package

In addition to including all software functionality defined previously, the full WebVision software package includes real-time file export (for linking to an ADF central management system - consult Tecnav for more info) and remote image inspection capabilities.



WebVision
100% quality control



Vision & Control