

Unwinding Module UW6-R



Purpose

Continuous supply of non-impact printers off the roll over a period of several hours.

Method of operation

By pressing a switch the roll with the mandrel inserted is brought into the working position by the motor-driven mechanism. After the paper-web has been pulled in manually, initialization of the module takes place automatically. The roll is driven at the center. The unwinding speed follows the requirements of the printer, under electronic control. The paper rolls can be unwound in either direction of rotation.

Special technical features

A responsive, productive unwinding module for rolls of up to 1370 mm in diameter. Ease of operation thanks to automatic dancer lift and operator guidance via a touch panel. A triple dancer guarantees clean paper web contact, enabling both lightweight and heavyweight papers to be processed. The dancer weight is totally decoupled by the outfeed drive, guaranteeing a seamless transfer to a high-performance digital printer.

Basic equipment

- Unwinding support-frame with electro-mechanical roll insertion
- Operator interface with touch screen
- Adjustable photocell for detecting minimum roll diameter
- Fully automatic dancer lift
- Loop control

Technical versions

- Lifting device dancer for heavyweight paper >180 g/m²
- Vacuum for cyclical operation or lightweight paper <70 g/m²
- Service unit for external air supply
- Compressor for built-in air supply
- Choice of pneumatic mandrels, for core diameters of 70 mm, 150 mm, 200 mm, 3", 5"
- Reel stops for pneumatic mandrels 70 mm, 150 mm, 3"

Optional equipment

- Web de-curling device

Technical data

Paper weight:	40–300 g/m ² ⁽¹⁾
Roll width:	165–520.7 mm 6 ¹ / ₂ –20 ¹ / ₂ "
Roll diameter:	max. 1370 mm 54"
Speed:	10–220 m/min. ⁽²⁾
Module current consumption:	208–240 VAC +6%/-10% 2LPE 50/60 Hz
	230 VAC +6%/-10% LNPE 50/60 Hz

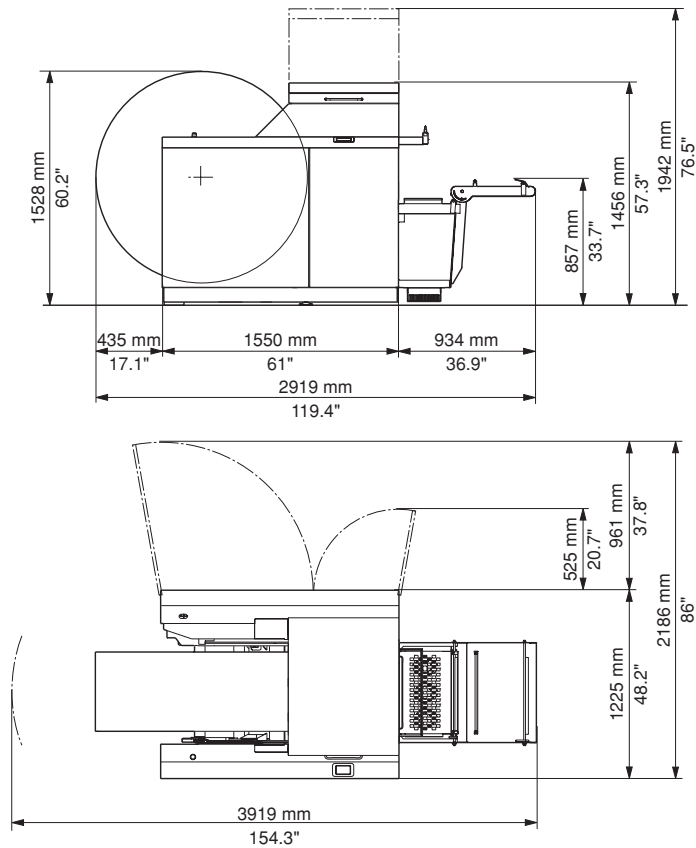
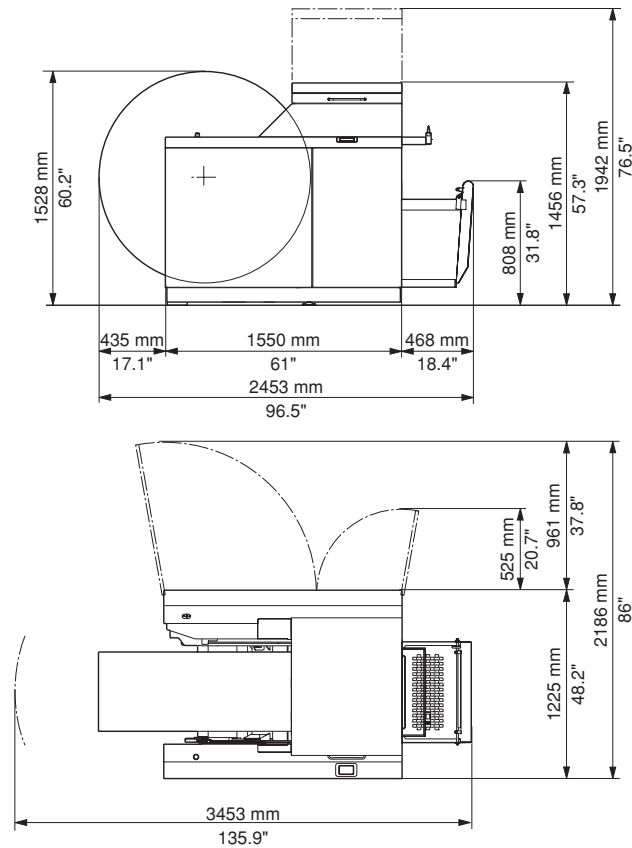
Rated current:	4 A
Effective output:	720 W
Apparent output:	950 VA
Heat dissipation:	2457 BTU/h 2592 kJ/h
Weight:	620 kg 673 kg ⁽³⁾
Maximum roll weight:	800 kg
Feeder power link:	Line 3x208–240 VAC +6%/-10% 3LPE 50/60 Hz Fusing: 20 Amp slow, by customer 3x400 VAC +6%/-10% 3LNPE 50/60 Hz Fusing: 25 Amp slow, by customer Standalone 208 VAC +6%/-10% 2LPE 50/60 Hz Fusing: 16 Amp slow, by customer 230 VAC +6%/-10% 2LNPE 50/60 Hz Fusing: 15 Amp slow, by customer

⁽¹⁾ >180 g/m², lifting device dancer for heavyweight paper required (for stiff paper >150 g/m²)

⁽²⁾ Speed >150 m/min from a min. roll diameter of 150 mm (6")

⁽³⁾ With vacuum loop control

All technical data subject to change



internet: www.hunkeler.ch

e-mail: info@hunkeler.ch

Hunkeler AG
CH-4806 Wilkon
Tel. (+41) 62 745 61 61
Fax (+41) 62 745 62 60

Hunkeler Deutschland GmbH
D-82024 Taufkirchen
Tel. (+49) 89 614 1590
Fax (+49) 89 612 8400

Hunkeler Italia Srl.
I-20099 Sesto San Giovanni (MI)
Tel. (+39) 0226 200 14
Fax (+39) 0224 411 923

Hunkeler Far East Ltd.
Wanchai, Hong Kong
Tel. (+852) 2528 4082
Fax (+852) 2866 2401