

# Unwinding Module UW4



## Purpose

Continuous supply of non-impact printers off the roll over a period of several hours.

## Method of operation

By pressing a switch the roll with the mandrel inserted is brought into the working position by the motor-driven mechanism. After the paper-web has been pulled in manually, initialization of the module takes place automatically. The roll is driven at the center. The unwinding speed follows the requirements of the printer, under electronic control. The paper rolls can be unwound in either direction of rotation.

## Special technical features

A responsive, productive unwinding system for rolls of up to 1370 mm in diameter. Simple operation with operator guidance in dialogue mode and fault diagnosis. Information concerning remaining roll diameter or the length of web unwound is shown on the display.

## Basic equipment

- Unwinding support-frame with electro-mechanical roll insertion
- Operating panel with digital display
- Adjustable photocell for detecting minimum roll diameter

## Technical versions

- Single dancer for speeds up to 90 m/min.
- Double dancer for speeds up to 150 m/min.
- Vacuum-operated loop-control system for moving the web in steps at speeds of up to 120 m/min
- Vacuum-operated loop-control system for CS4-W Offline
- Service unit for external air supply
- Compressor for built-in air supply
- Choice of pneumatic mandrels, for core diameters of 70 mm, 150 mm, 200 mm, 3", 5"
- Reel stops for pneumatic mandrels 70 mm, 150 mm, 3"
- Web de-curling device for continuous 150 m operation

## Optional equipment

- Gluing table at the output of the module
- Indicator light
- Clamping sleeves

## Technical data

Paper weight:	50–180 g/m <sup>2</sup> ; 50–120 g/m <sup>2</sup> <sup>(3)</sup>	
Roll width:	165–520.7 mm 6 <sup>1</sup> / <sub>2</sub> –20 <sup>1</sup> / <sub>2</sub> "	
Roll diameter:	max. 1370 mm 54"	
Speed:	20– 90 m/min. <sup>(1)</sup> 20–150 m/min. <sup>(2)</sup> 20–120 m/min. <sup>(3)</sup>	
Electrical power:	208 VAC ±10% 2LPE 50/60 Hz 230 VAC ±10% LNPE 50/60 Hz	
Fusing:	16 Amp slow, by the customer	
Rated current:	5 A <sup>(1)</sup> 10 A <sup>(2)</sup>	
Effective output:	0.6 kW <sup>(1)</sup> 1.2 kW <sup>(2)</sup>	
Apparent output:	0.8 kVA <sup>(1)</sup> 1.7 kVA <sup>(2)</sup>	
Heat dissipation:	2047 BTU/h <sup>(1)</sup> 4094 BTU/h <sup>(2)</sup> 2160 kJ/h <sup>(1)</sup> 4320 kJ/h <sup>(2)</sup>	
Weight:	560 kg <sup>(1, 2)</sup> 640 kg <sup>(3)</sup>	
Maximum roll weight:	640 kg	

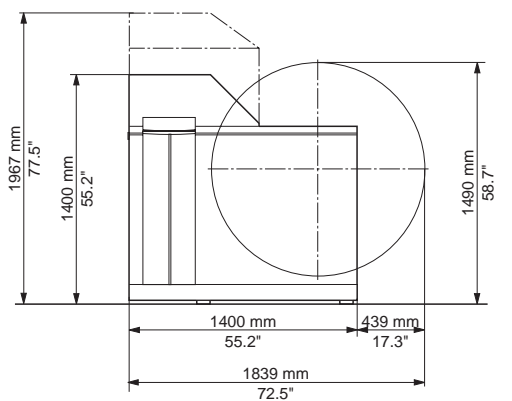
<sup>(1)</sup> Single dancer

<sup>(2)</sup> Double dancer

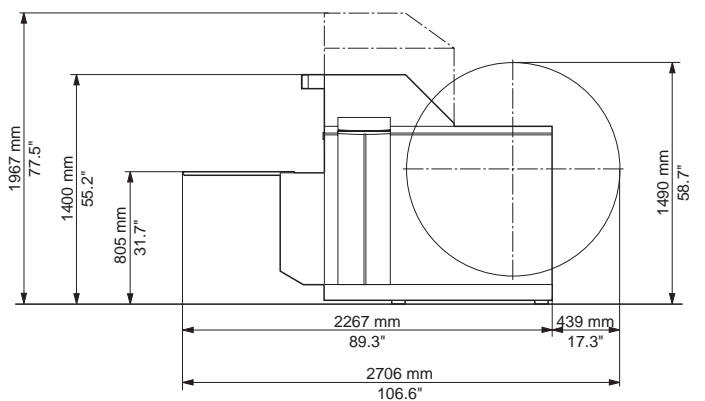
<sup>(3)</sup> Vacuum loop-control

**All technical data subject to change**

Version 1 and 2



Version 3



internet: [www.hunkeler.ch](http://www.hunkeler.ch)

e-mail: [info@hunkeler.ch](mailto:info@hunkeler.ch)

**Hunkeler AG**  
CH-4806 Wilkon  
Tel. (+41) 62 745 61 61  
Fax (+41) 62 745 62 60

**Hunkeler Deutschland GmbH**  
D-82024 Taufkirchen  
Tel. (+49) 89 614 1590  
Fax (+49) 89 612 8400

**Hunkeler Italia Srl.**  
I-20099 Sesto San Giovanni (MI)  
Tel. (+39) 0226 200 14  
Fax (+39) 0224 411 923

**Hunkeler Far East Ltd.**  
Wanchai, Hong Kong  
Tel. (+852) 2528 4082  
Fax (+852) 2866 2401