

InfoPrint 4100

InfoPrint 4100



Production

Raises the bar for print quality, performance and productivity in digital publishing and transactional print environments

Latest enhancements

Universal Forms Control sensor can improve operator productivity by aligning forms using any preprinted object

Improved toner loading mechanism can help maintain a cleaner printer

With intelligent halftone switching, different halftones for different page components can be automatically selected to achieve optimum print quality

InfoPrint newly-formulated toner is now available for InfoPrint 4100 TS2, TS3, and TD3/4, TD5/6 models

The InfoPrint 4100 Advanced Function Printing System has taken another leap forward, surpassing its previous benchmark as a stable, proven frontrunner in electrophotographic (EP), continuous forms platforms. Recent improvements strengthen and augment market-leading capabilities that can help you differentiate your company, lower production print costs, increase productivity and respond more quickly to evolving customer requirements.

In virtually all production print environments, the InfoPrint 4100 can help you meet your operating objectives. It can produce images, graphics and text on many types of media at a quality level that is traditionally available only from cutsheet solutions. In addition, the

HIGHLIGHTS

Maintain productivity with high speed – up to 330 linear ft/100.6 m per minute (1,440 2-up duplex letter impressions or 1,354 2-up A4 duplex impressions)¹

Utilize industry-leading 600 dpi image quality that is suitable for all applications, including TransPromo/Precision Marketing, business publications and direct mail

Support MICR toner printing at ultra-high speeds

Boost performance with the InfoPrint POWER controller, which incorporates superb functionality, such as parallel multi-RIP processing and color emulation

Gain the ability to print true, 3-up pages with the extra-wide format (19.5" paper width, up to 19" print width)

Support a range of media to match evolving job requirements

Gather operator, printer and job statistics with InfoPrint Productivity Tracker software

RICOH
imagine. change.

Raises the bar for print quality, performance and productivity in digital publishing and transactional print environments

InfoPrint 4100 is one of the fastest EP printers available today. As a result, you can increase production output with fewer devices and less operator time—an excellent strategy to build your business.

You may print high-impact statements, catalogs, TransPromo/Precision Marketing, publications, books with halftones and photos, or other high-volume projects. Regardless of the application, the printer's high quality can give you a competitive advantage, and you can further reduce operational costs with the flexibility of integrated pinfed or pinless[®] printing.

Book printers can reduce the costs of short-run books or technical manuals. Direct mailers and service bureaus can lower costs by running diverse paper weights at higher speeds. MICR is available at ultra-high speeds, adding flexibility for you to run all applications on the same production platform at maximum throughput.

Uncompromising print quality

The latest InfoPrint 4100 models—TS1, TS2, TS3, TD1/2, TD3/4 and TD5/6—offer one of the highest levels of quality for text, image and line graphics compared to competitive continuous forms printers at comparable speeds. Software enhancements that contribute to uncompromising print quality include an innovative 256-level grayscale simulation of color objects using patented technologies of InfoPrint Solutions Company. Our grayscale simulation technology enables you to print jobs on the InfoPrint 4100 without changing applications and incurring expensive programming costs.

Hardware advancements are designed to produce sharp, clear images and text, job after job. The state-of-the-art blue semiconductor laser printhead, in combination with InfoPrint's unique digital Print Quality Enhancement (PQE), can improve print quality dramatically at high speeds. The speed switch can support media that ranges from 45 gsm to 160 gsm, and the newly-formulated toner is designed to provide more consistent print quality at all supported speeds.

The InfoPrint 4100 is available with your choice of premium quality, which is based on InfoPrint Image Enhancement technology, and high quality, in both simplex and duplex models.

Time- and money-saving features

The InfoPrint POWER Controller™, which is standard on all models, incorporates superb functionality and performance, featuring state-of-the-art RISC technology that supports object caching, parallel multi-RIP processing and color emulation. The graphical, easy-to-use InfoPrint POWER Controller operator panel can serve double duty as an InfoPrint Manager workstation, enabling operations managers to log on and manage print jobs and queues from the print room. Authorized operators can preview job queues from the printer console and prepare for upcoming form changes.

InfoPrint newly-formulated toner improves print quality and media flexibility at ultra-high speeds (available for TS2, TS3, and TD3/4, TD5/6 models).

High-speed MICR printing at up to 330 ft (100.6 m) per minute¹ enables improved productivity and an excellent read rate.

The Image Enhancement technology provides graphic arts print quality for applications such as books and publications on InfoPrint 4100 TD1/2 and TD3/4 models. Image Enhancement can deliver enhanced images with smoother halftones and sharper contrast at up to 230 ft per minute (1,002 impressions per minute)¹ using enhanced 600 dpi technology with industry-leading 256 levels of grayscale.

InfoPrint Productivity Tracker software enhances the information available to operations managers regarding printer performance, operator activities and print job statistics. The software augments the browser-based Online Access remote monitoring support. It can allow you to define and capture most printer and pre- and post-processor events to provide data for full accounting of the operation.

Pinfed and pinless⁶ printing enable print job flexibility and full printer utilization because operators can switch back and forth. Also, autoloader and autoalign functions provide fast, easy paper threading for both pinfed and pinless operations. An improved vacuum drive system can tighten registration during pinless printing.⁶

The Commercial Print feature is designed to support 9-point (0.009" thickness) coated stock at speeds up to 330 ft (100.6 m) per minute¹—ideal for efficient direct mail operations.

The industry-standard Universal Printer Pre- and Post-processing Interface (UP3i) can enhance finishing capabilities, automate configuration settings and extend sheet-level error recovery to the UP3i-attached pre- and post-processing and finishing devices.

Customer Changeable Developer allows operators to efficiently change the developer, helping to increase system availability for MICR printing. Recent improvements, such as customer-replaceable drums and hot rolls, help to increase overall system throughput because they reduce parts replacement downtime.

Multiple high-speed attachments, such as IBM[®] FICON[®] (Fiber Connectivity) and Gigabit Ethernet, offer greater distance flexibility and support of complex applications at up to rated speed.

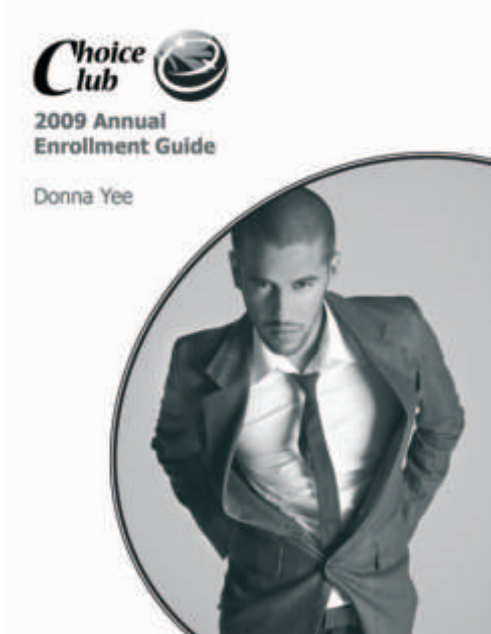
The Forms Identification feature is designed to help minimize reprint costs by verifying that the correct form is loaded.

Economy and performance features—true 3-up printing with buffer to trim

Extra-wide print web—the 19" print width accommodates 3-up 6" x 9" or A5 with plenty of trim buffer for books, manuals and loose-leaf documents.

High productivity—up to 2,238 ipm throughput in 3-up, 6" x 9" printing mode and 2,436 ipm 3-up A5,¹ all with superior print quality.

Standard warranty in most countries is three months onsite, 24x7. Warranty periods may vary by country. For more information, please contact your local InfoPrint Solutions Company representative.



InfoPrint 4100 Advanced Function Printing System at a glance

Max. Print Speed	TS1	TD1/2	TS2	TD3/4	TS3	TD5/6
Linear ft/m per minute	175/53.34	175/53.34	280/85.34	280/85.34	330/100.6	330/100.6
(Low speed switch)			(230/70)	(230/70)	(280/85.34)	(280/85.34)
1-up 8.5" x 11"	247 ipm	494 ipm	395 ipm	790 ipm	466 ipm	932 ipm
2-up 8.5" x 11"	381 ipm	762 ipm	610 ipm	1,220 ipm	720 ipm	1,440 ipm
3-up 6" x 9"	700 ipm	1,400 ipm	1,119 ipm	2,238 ipm	1,320 ipm	2,640 ipm
1-up A4	253 ipm	506 ipm	406 ipm	812 ipm	478 ipm	956 ipm
2-up A4	359 ipm	718 ipm	574 ipm	1,148 ipm	677 ipm	1,354 ipm
3-up A5	761 ipm	1,522 ipm	1,218 ipm	2,436 ipm	1,437 ipm	2,874 ipm

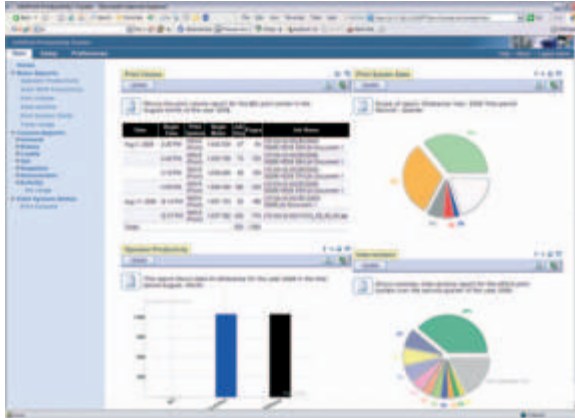


Item	Specifications
Paper Capacities	Input: Up to 16" (408 mm) stack of boxed paper Output: Up to 14" (356 mm) stack of paper; or up to 6" stack height with 14" long form. Pre-and post-processing interfaces allow additional capabilities and are required for pinless printing; internal stacker support is available for pinfed paper
Media	
Paper width	Pinfed: 8.3" to 19.5" (210 mm to 495 mm) Pinless: 8" to 19.5" (203 mm to 495 mm)
Print width	Pinfed: 18.5" (469 mm) Pinless: 19" (482 mm)
Paper length	Internal stacker: 7" to 14" (178 mm to 356 mm) Signature Page feature: 3" to 54" (76.2 mm to 1371 mm) for pinfed and pinless
Paper weight	TS1, TD1/2: 16 lbs to 42 lbs (60 gsm to 160 gsm ³) TS2, TD3/4: 16 lbs to 54 lbs (60 gsm to 203 gsm ³) TS3, TD5/6: 16 lbs to 54 lbs (60 gsm to 203 gsm ³) Reference Forms Design Guide for detailed specifications Paper weight support varies depending on the configuration (simplex or duplex), paper path (pinfed or pinless) and speed
Paper type	Pinfed and pinless: preprinted, plain, boxed fanfold forms and roll-fed paper

For more information

Contact your InfoPrint Solutions Company representative or InfoPrint Solutions Partner or visit: infoprint.com

InfoPrint Productivity Tracker customizable report



Item	Specifications
System Attachments	
AFP™ Software Support	PSF for z/OS®, InfoPrint Manager for AIX®, InfoPrint Manager for Windows®, InfoPrint ProcessDirector™ for Linux®, InfoPrint ProcessDirector for AIX, InfoPrint Productivity Tracker V2.12
Standard Features	InfoPrint POWER Controller and Operator Panel, operator-switchable resolution (480 dpi or 600 dpi) and paper path (pinfed and pinless), imposition support, 256-level grayscale simulation, SNMP support, pre- and post-processing interfaces, flat-panel touch-screen GUI, keyboard and mouse, Ethernet attachment
Options⁴	Image Enhancement, AFP Color Emulation, Commercial Print feature, Productivity Tracker software ² , Forms Identification, Signature Page, additional or advanced pre- and post-processing interfaces, UP3i interfaces second attachment, performance upgrade, additional Customer Changeable Developer, internal stacker
Physical Characteristics (per engine)	104" x 39" x 61" (2,642 mm x 991 mm x 1,550 mm) (W x D x H); 2,226 lb/1,012 kg (weight TD1, TD3, TD5); 2,356 lb/1,071 kg (weight TS1, TS2, TS3, TD2, TD4, Td6)
Power Requirements	208/220/230/240 V ac/60 Hz, 3-phase, 4-wire; 380/400/415 V ac/50 Hz, 3-phase, 5-wire; 200/220 V ac/50 Hz or 60 Hz, 3-phase, 4-wire. Voltage determined by country standards. Models TS1, TS2, TS3, TD1/2, TD3/4 and TD5/6 also require a 200 V ac to 240 V ac, 50/60 Hz, 10 amp power source for the controller module

InfoPrint 4100 Color Emulation feature



Power Consumption ² (per engine)	Frequency	Ready mode	Printing with 20 lb paper
TS1, TD1/2	60 Hz/50 Hz	3.0 kVA	10.5 kVA
TS2, TD3/4	60 Hz/50 Hz	3.0 kVA	12/12.5 kVA
TS3, TD5/6	60 Hz/50 Hz	3.7 kVA	15.5 kVA

Environmental Conditions

Optimal Ranges	Temperature: 65°F up to 75°F (18°C up to 24°C); Relative Humidity: 40% up to 60%
Permitted Ranges	Reference appropriate Planning and Configuration Guide for detailed specifications
Acoustics	50/60 Hz - 65 db (operating) or 58 db (idle)

ENDNOTES

- ¹ Exact speed varies depending on document complexity, system configuration, software application, driver and printer state.
- ² InfoPrint Solutions Company Productivity Tracker Version 2.1 (5639-AA9) is required for the Productivity Tracking feature.
- ³ 12 lbs to 16 lbs (45 gsm to 60 gsm) paper weight support is subject to InfoPrint Solutions preapproval, depending on paper quality, application and desired running speed. Contact your sales representative to submit forms for preapproval.
- ⁴ Some optional features are only available on certain models. Please contact your InfoPrint Solutions Company representative for details.
- ⁵ Engine only. Control units and air bearing buffer flippers require additional 2.2kVA to 2.7kVA, depending on configuration. Complete specifications can be found in the Planning and Configuration Guide.
- ⁶ The terms "pinfed" and "pinless" may be used interchangeably with "tractored" and "tractorless" throughout several InfoPrint documents.

© Copyright InfoPrint Solutions
Company 2011
All rights reserved

InfoPrint Solutions Company, LLC
6300 Diagonal Highway 002J
Boulder, Colorado 80301-9270
U.S.A.

Printed in the United States of America
January 2011

Ricoh, InfoPrint and the InfoPrint logo are trademarks or registered trademarks of Ricoh Co., Ltd., in Japan, the United States and other countries, and are used under license from the trademark owner.

InfoPrint Solutions is a tradename of InfoPrint Solutions Company, LLC, in the United States, other countries, or both.

IBM, ibm.com, the IBM logo, AIX, FICON and z/OS are registered trademarks of International Business Machines Corporation in the United States, other countries, or both. The Ricoh and IBM trademarks are used under license from their respective trademark owners.

Linux is a registered trademark of Linus Torvalds in the United States, other countries, or both.

Windows is a trademark of Microsoft Corporation in the United States, other countries, or both.

Other company, product, or service names may be trademarks or service marks of others. References in this publication to InfoPrint Solutions Company products or services do not imply that InfoPrint Solutions Company intends to make them available in all countries in which InfoPrint Solutions Company operates.

Visit the InfoPrint Solutions Company web site at infoprint.com

Other company, product, or service names may be trademarks or service marks of others.

RICOH
imagine. change.

URL: <http://www.ricoh.co.in>

RICOH INDIA LIMITED

CORPORATE OFFICE: 2nd Floor, Salcon Aurum Building, Plot No. 4, District Centre, Jasola, New Delhi-110 025
Tel: (011) 49103000, 49103100, 49103200 Fax: (011) 49103099, 49103199 Email: ril.info@ricoh.co.in SMS: 'RICOH' to 53456
REGISTERED OFFICE: 1201, 1st Floor, Building No. 12, Solitaire Corporate Park, Andheri-Ghatkopar Link Road, Chakala, Andheri-East, Mumbai - 400 093 Tel: (022) 66833000 Fax: (022) 67032099
Ahmedabad, Bangalore, Bhopal, Bhubaneshwar, Chandigarh, Chennai, Coimbatore, Delhi, Gurgaon, Guwahati, Hyderabad, Jaipur, Kochi, Kolkata, Lucknow, Mumbai, Nagpur, Patna, Pune, Ranchi, Visakhapatnam.

For more information, please contact:

IPRD03082-USEN-05